



Browning Seed, Inc.

3101 Interstate 27 Frontage

Plainview, TX 79072

Phone: (806)293-5271

Website: www.browningseed.com

Indiangrass

Description

Indiangrass, *Sorghastrum nutans*, is a native warm-season, bunch grass. At maturity in September, this grass is golden, plume-like head and reddish-yellow foliage making it one of the most beautiful of the native grasses. It is adapted to a wide range of soils, thriving on well drained bottom land, but can also grow in sandy soils.

Varieties

- Cheyenne
- Holt
- NE 54
- Osage
- Oto
- Rumsey
- Scout
- Tomahawk

Primary Uses

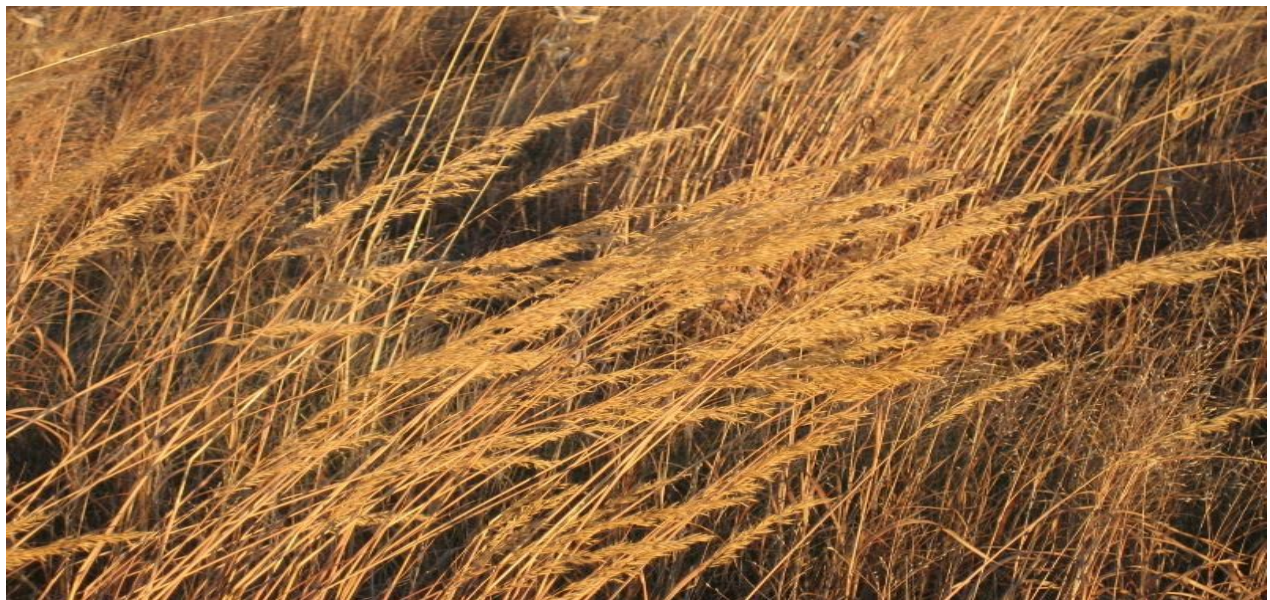
It is one of the most important native tall grasses for its palatable and nutritious forage for livestock. Other uses include valuable wildlife habitat, and a great landscape plant.

Benefits

- ◆ Perennial
- ◆ Can grow to reach 5-7 ft. tall
- ◆ Most important native tall grasses for nutritious forage
- ◆ Great adaptability
- ◆ Valuable wildlife habitat
- ◆ Drought tolerant

Planting/Sowing Guide

USDA recommends planting 1.5 pls/acre for grazing or hay. 2.0 pls/1000 Sq. Feet is recommended for turf or yards.



Browning Seed - "Programmed for Profit"™